

SSPH Workshop 2017

November 10-11, 2017

Art Deco Hotel Montana, Lucerne, Switzerland



Schweizerische Gesellschaft für Pulmonale Hypertonie SGPH
Société Suisse sur l'Hypertension Pulmonaire SSPH
Società Svizzera di Ipertensione Polmonare SSIP
Swiss Society for Pulmonary Hypertension SSPH

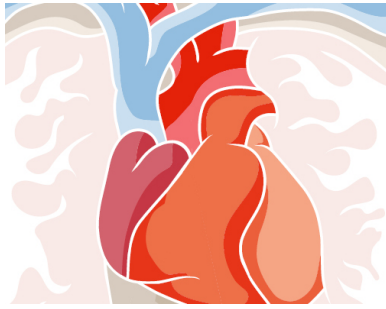
Program

Friday, November 10, 2017

- 12.30 – 13.45 Arrival and Check-In at Art Deco Hotel Montana
Welcome-Lunch
- 14.00 – 14.15 **Welcome Address**
Frédéric Lador, Genève, President SSPH
- Aims of the workshop
 - Presentation of the new SSPH Logo
 - Project for a new SSPH website
- 14.15 – 15.15 **Physiology of the pulmonary circulation and right heart –
from the early pioneers to the 21th century**
Guest of honour lecture with Prof. Robert Naeije, MD, PhD, Brussels
- 15.15 – 15.45 Coffee break
- 15.45 – 17.15 **Workshop Part I: Bring your cases!**
Interactive discussion with Prof Robert Naeije and SSPH members
about your difficult or extraordinary cases. Up to six cases (5 minutes
presentation + 10 minutes discussion) will be presented.
- 17.15 – 18.15 **SSPH General Assembly 2017**
- from 19.00 Cocktail and Dinner

Saturday, November 11, 2017

- 08.30 – 10.00 **Workshop Part II: New SSPH website: right to the goal!**
Small group discussion, followed by synthesis of discussions
Andrea Azzola, Lugano
- 10.00 – 10.30 Coffee break
- 10.30 – 11.15 **Workshop Part III: How to improve our network?**
Brainstorming plenary session – Silvia Ulrich, Zürich
- 11.15 – 11.45 **Workshop Part IV: Next SSPH Congress: your wish list**
Plenary session – Frédéric Lador, Genève
- 11.45 – 12.00 **Conclusions**
Silvia Ulrich, Zürich; Frédéric Lador, Genève; Andrea Azzola, Lugano
- 12.00 – 13.30 Lunch



SSPH Workshop 2017

November 10-11, 2017

Art Deco Hotel Montana, Lucerne, Switzerland



Schweizerische Gesellschaft für Pulmonale Hypertonie SGPH
Société Suisse sur l'Hypertension Pulmonaire SSHP
Società Svizzera di Ipertensione Polmonare SSIP
Swiss Society for Pulmonary Hypertension SSPH

Location

Art Deco Hotel Montana

Welcome to one of Switzerland's best four-star city hotels. Enjoy the delightful art deco ambiance with the warmest hospitality –overlooking the city and lake of Lucerne. Adligenswilerstrasse 22. CH-6002 Luzern, Switzerland | www.hotel-montana.ch

SSPH Board

President	Dr méd Frédéric Lador	Hôpitaux Universitaires de Genève
President elect	Dr. med Andrea Azzola	Ospedale Civico Lugano
Past President	Prof. Dr. med. Silvia Ulrich	UniversitätsSpital Zürich

Guest of honour

Professor Robert Naeije, MD, PhD

Robert Naeije is Professor Emeritus at the Free University of Brussels (Université Libre de Bruxelles, ULB) and Consultant at the Pulmonary Hypertension Clinic of the Department of Cardiology, Erasme University Hospital, Brussels. He founded the Pulmonary Hypertension clinic at the Erasme University Hospital and published extensively about pulmonary circulation, gas exchange, right ventricular function and exercise, with a total of more than 50 book chapters and 400 articles covering a range of topics, from cell and molecular biological aspects, to mathematical modeling, integrative physiology and clinical studies.

Partner companies

The SSPH Workshop 2017 is kindly supported by

Premium Partner



Partner



Supporter

